

OPTIONAL BASKET AVAILABLE MODEL # 9501S72606

SEE PAGE 52 & 53 FOR REPLACEMENT SEATS.

EASY HEIGHT ADJUSTMENT WITH SELF THREADING KNOB!

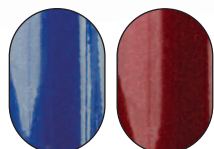


FOLD-UP & REMOVABLE BACKREST!



R728BL

COMES WITH NEW SEAMLESS PADDED SEAT WITH CARRY POUCH!



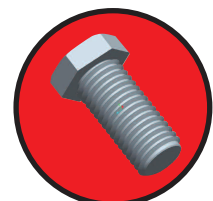
Blue Red

Aluminum Rollator with Fold Up and Removable Back Support, Padded Seat, 8" Casters with Loop Locks

- R728BL Blue, (Has replaced R8BL and 728BL), 1/cs
- R728RD Red, (Has replaced R8RD and 728RD), 1/cs

FEATURES:

- Large 8" casters are ideal for indoor and outdoor use.
- Removable, hinged, padded backrest can be folded up or down.
- Handles are adjustable in height.
- Easy to use loop locks.
- Comes with padded seat with zippered pouch under seat.
- Comes standard with pouch.
- Limited Lifetime Warranty.



PARTS DIAGRAMS ON PAGE 63

Winnie, Dannie Steel Rollator, 6" Casters with "Lite Touch" Reverse Locking System

- 720* Atlantic Blue, 1/cs

FEATURES:

- 6" casters with soft-grip tires are ideal for indoor and outdoor use.
- Padded back rest for comfort.
- Patented "Lite touch" reverse locking system.
- Standard clear plastic tray rests on plastic seat.
- Therapist assisted bar for better attendant control.
- Independent adjustable locks in three positions.
- Suitable for single-handed use.
- Sturdy steel construction.
- Handles are adjustable in height.
- Excellent for Neurological Diagnosed Customers.
- Comes with large 14" (W) x 11" (D) x 7" (H) front mounted basket.
- Limited Lifetime Warranty.
- Lifetime Warranty on brake cable.



720*

6" CASTERS

SEE PAGE 52 & 53 FOR REPLACEMENT SEATS.

SPECIFICATIONS

Item #	Handle Height Highest	Handle Height Lowest	Unit Width	Unit Length	Seat (depth)	Seat (width)	Seat (height)	Product Weight	Carton Shipping Weight	Weight Limit
R728 SERIES	38"	33"	24"	28"	14"	14"	23"	14 lbs.	18 lbs.	300 lbs.
720	35"	33"	23"	26"	9"	21"	23"	30 lbs.	34 lbs.	350 lbs.

Important Notice: Item numbers that display an asterisk () reflect an item that will be discontinued or package change.